

## MSD3463 software upgrades (After Service)

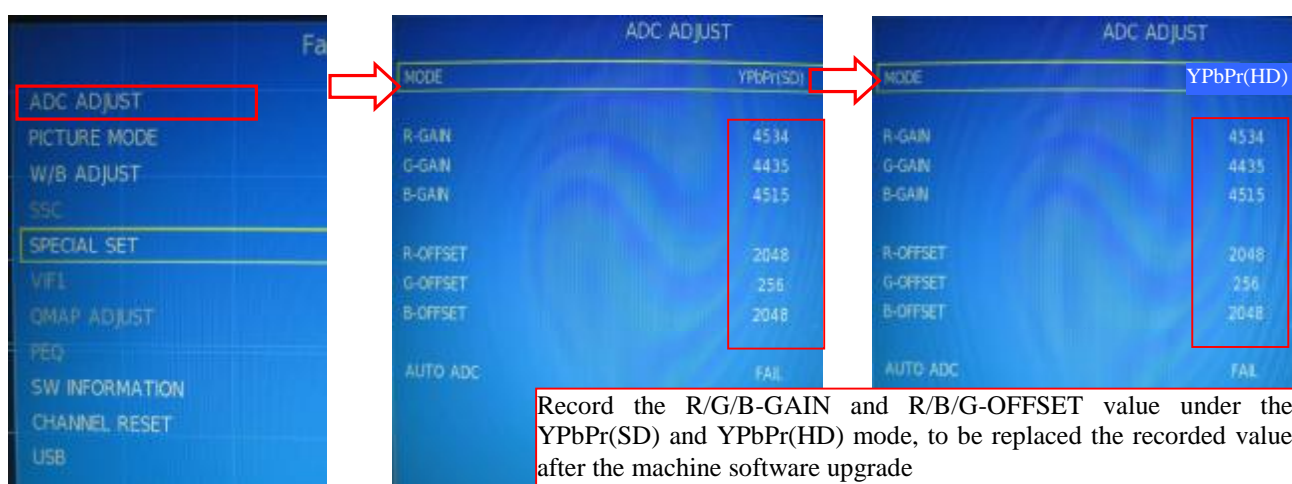
### 1、 Software upgrade tools and materials

- u AC100~240V power supply and power cord
- u USB flash disk (2.0 version, Capacity not more than 2G)

### 2、 Preparatory work before the upgrade

Recorded all the ADC and the white balance data of all the message source in factory menu before upgrade(FLASH initialization may occur after the upgrade, flush color calibration data, then restore the data you have been recorded):

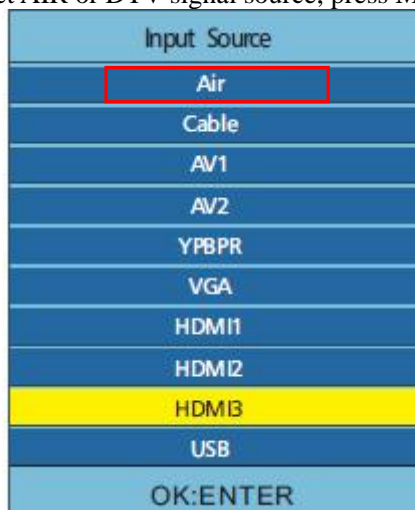
1. In the condition of YPbPr message source, press the MENU button after appear the main menu, then followed by 8202 number keys to enter the factory menu, select ADC ADJUST item, press the OK key to enter the next level menu, move the cursor to the MODE item, press the left / right Moving button and move the cursor selection in YPbPr (SD)item, record the R-GAIN/G-GAIN/B-GAIN value and R-OFFSET/G-OFFSET/B-OFFSET value.
2. In the ADC ADJUST item, press OK key to enter the next level menu, move the cursor to the MODE item, press the left / right cursor keys to select YPbPr (HD) item, record R-GAIN/G-GAIN/B-GAIN value and R-OFFSET/G-OFFSET/B-OFFSET value.



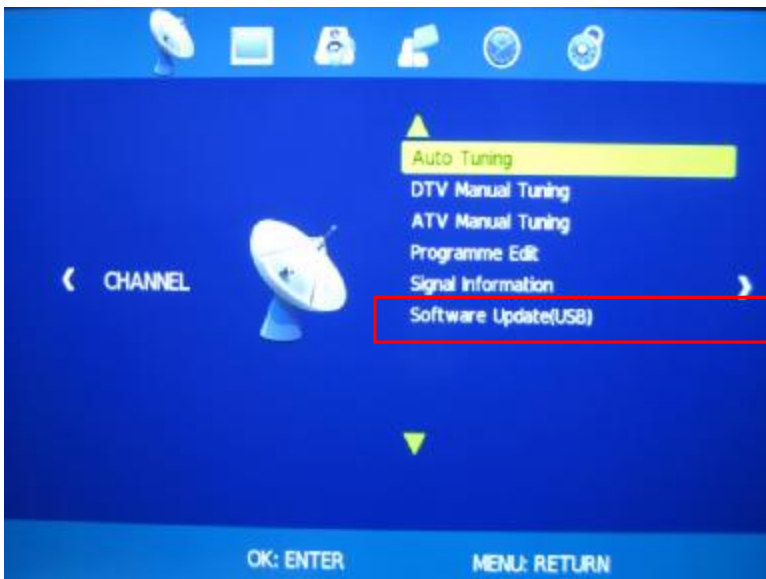
### 3. Operations and procedure of software upgrading:

- 3.1. Changed the file name to "MERGE.bin", then stored software in the FAT32 format blank U disk.
- 3.2. Insert USB flash disk into the USB upgrade port, upgrade the software according to the following the operating instructions:

Select AIR or DTV signal source, press Menu key to pop up the main menu, then choose.



Select Software Update(USB), press right key or OK key to enter.



Software update menu will pop up when press confirm key, then select “Yes” to confirm:



The process of software updating:



Method 2: Keep pressing VOL+ and CH+ keys on the machine panel, power on the machine, the standby light flashes quickly after about 5 seconds, standby light extinguish and turn into lighting after about a minute, means that the upgrade is completed.

3.3. Notice:

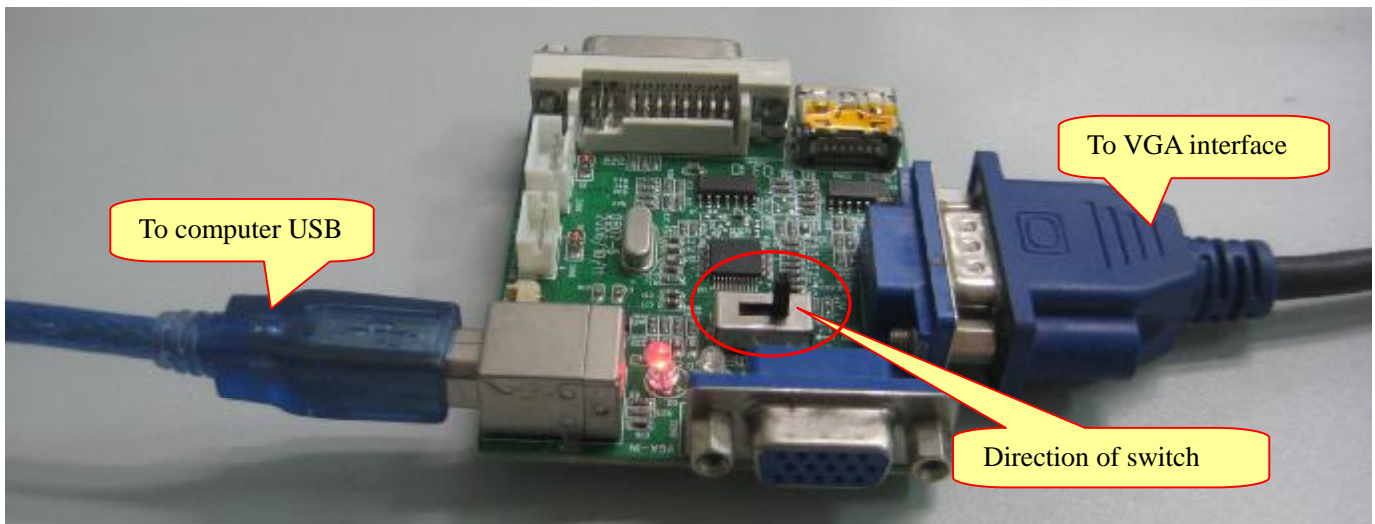
- ①. When the machine Upgrading (U disk light flash), do not remove U disk or switch off the power, otherwise it will destroy the software and lead can not upgrade.
- ②. The machine must be power off when inserted or pulled out U disk, to avoid U disk or damage the machine.

4、 When cannot upgrade in accordance with the step two, or upgrade failed, can only ISP upgrade, please refer to the following instructions.

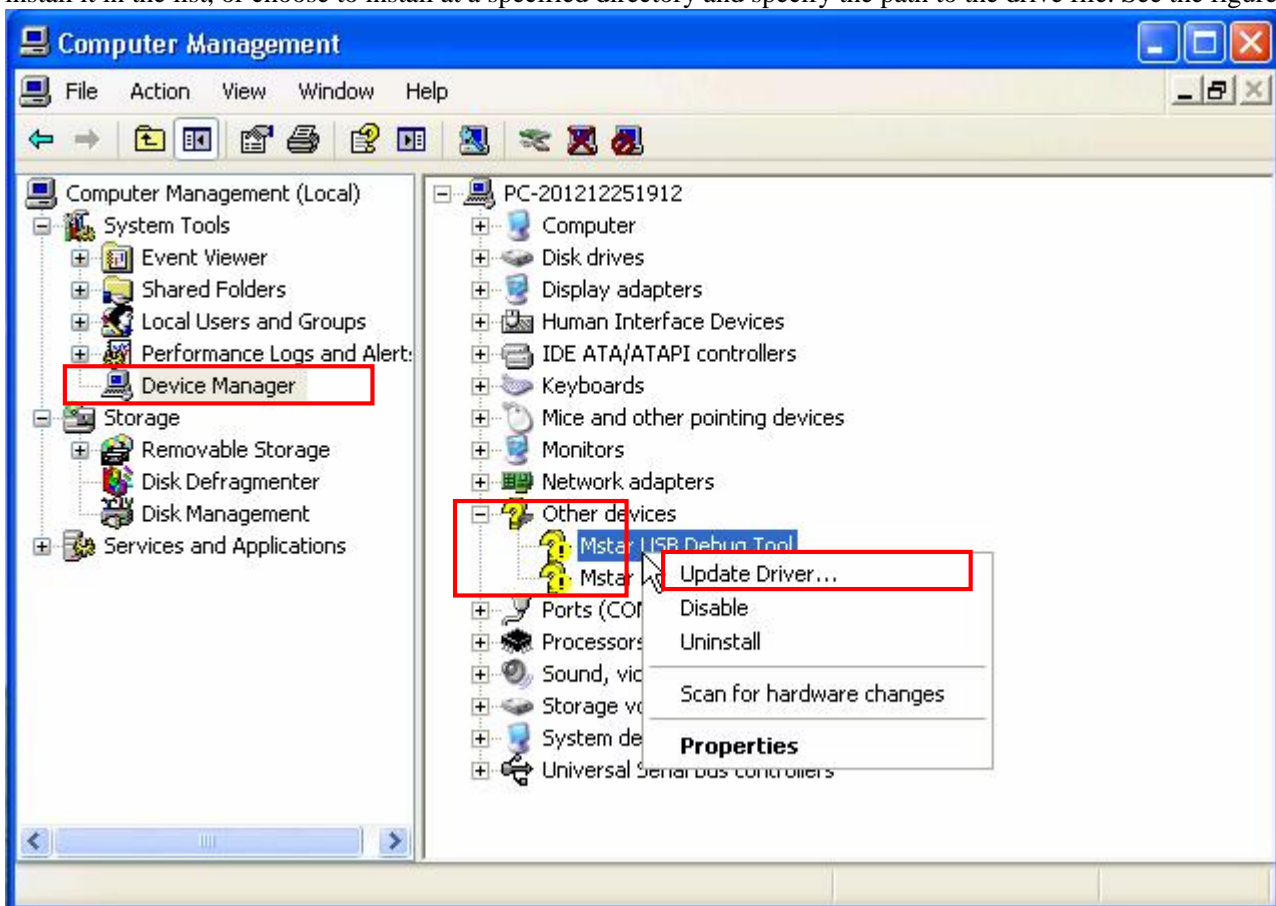
ISP to upgradetools and materials ( **When mainboard can not use USB interface to upgrade** ) :

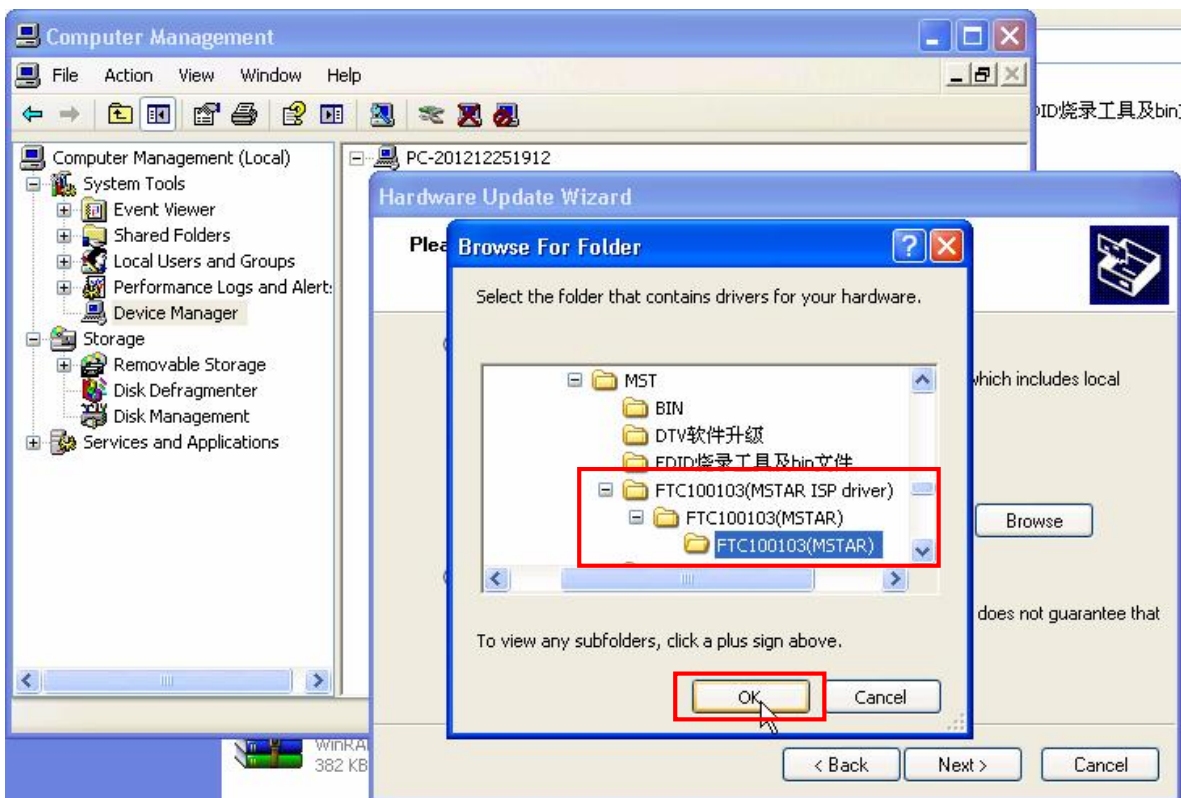
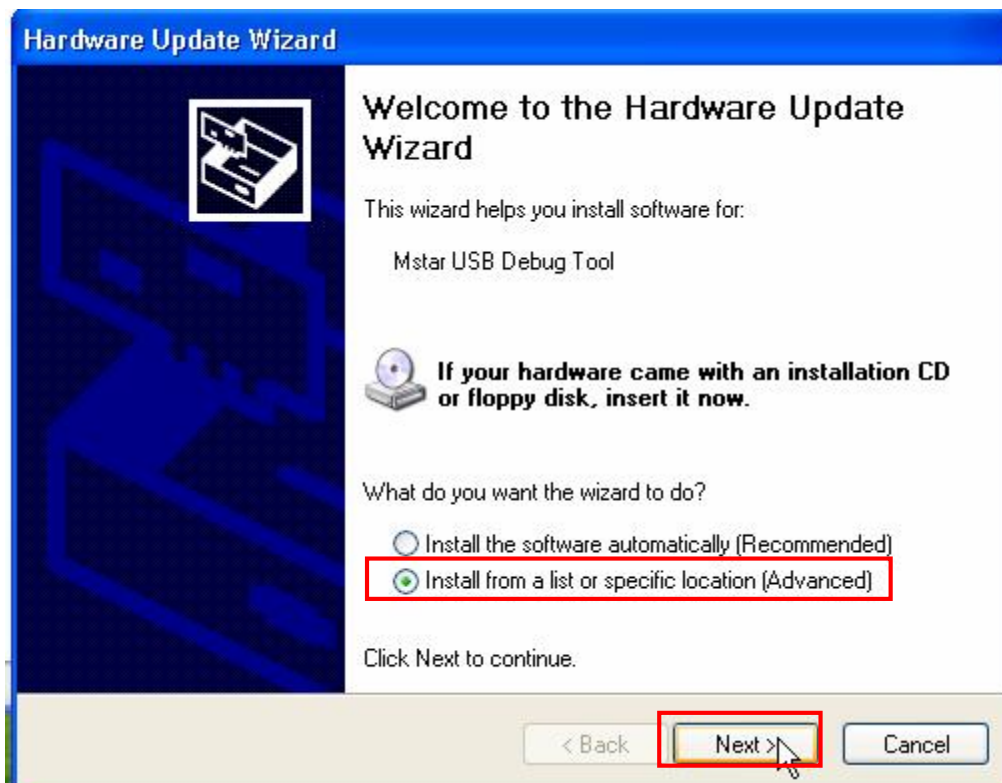
- \* Personal computer (WINDOWS XP system,USB2.0)
- \*AC100~240V power supply and power cord
- \*Drivers for ISP burning board ISP
- \*ISP\_Tool\_474.exe
- \*VGA cable

(1). Connect the ISP burning board and TV VGA port with VGA cable.

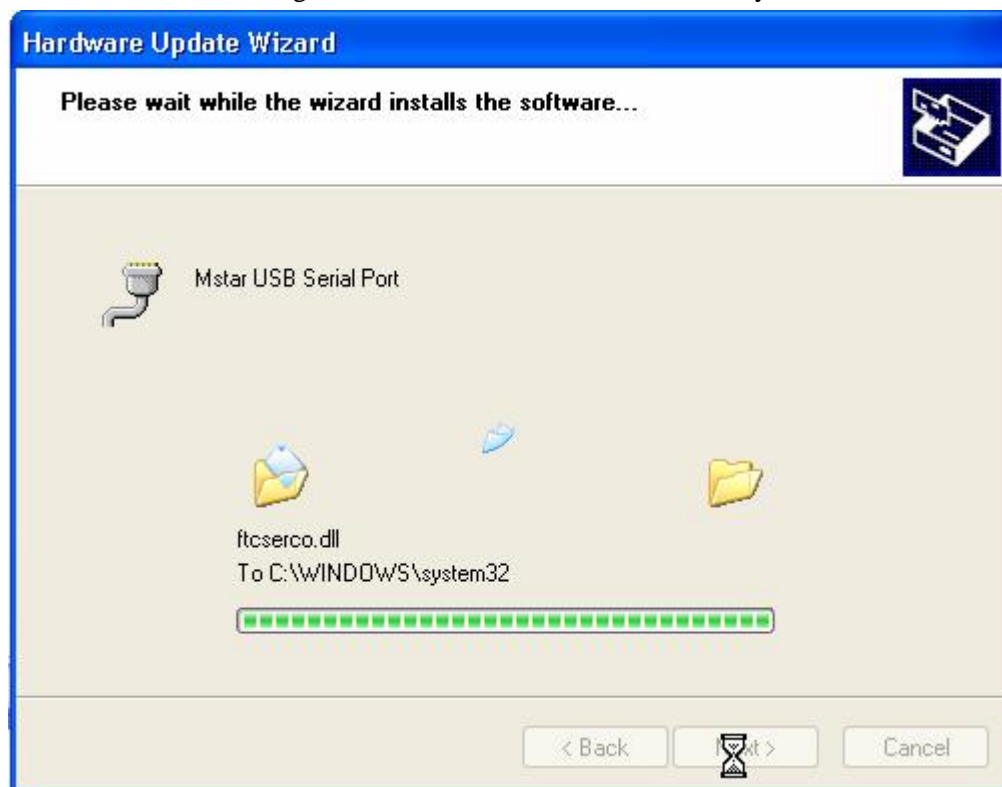


(2). Insert the Mstar USB Tool into the USB port of your PC. The PC can recognize the new device. You can choose to install it in the list, or choose to install at a specified directory and specify the path to the drive file. See the figure below:



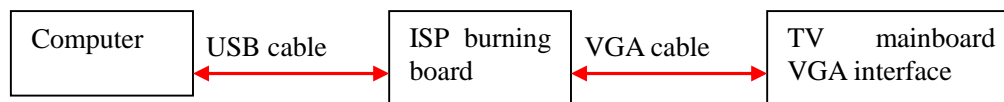


(3) When PC finds the drive file, it will give the prompts as in the figure below during the installation process. Please click “Continue” to go ahead. The system will go through three drive installation processes, including Mstar USB Debug Tool A, Mstar USB Debug Tool B, and Mstar USB SerialPort. They will be installed one by one.

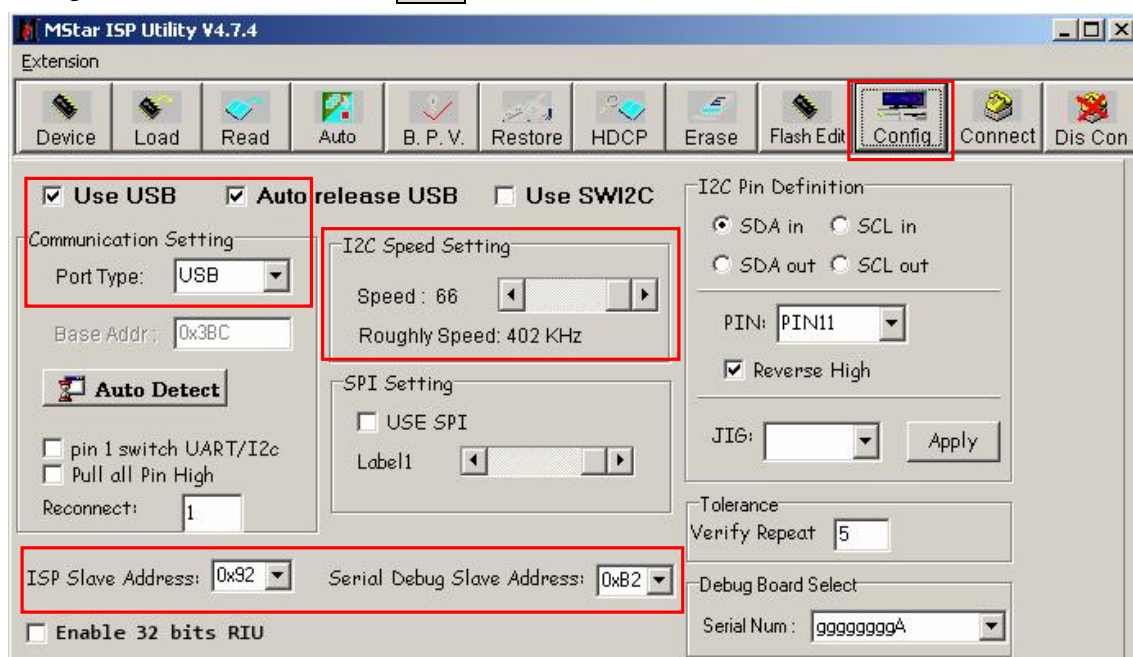


#### Software burning

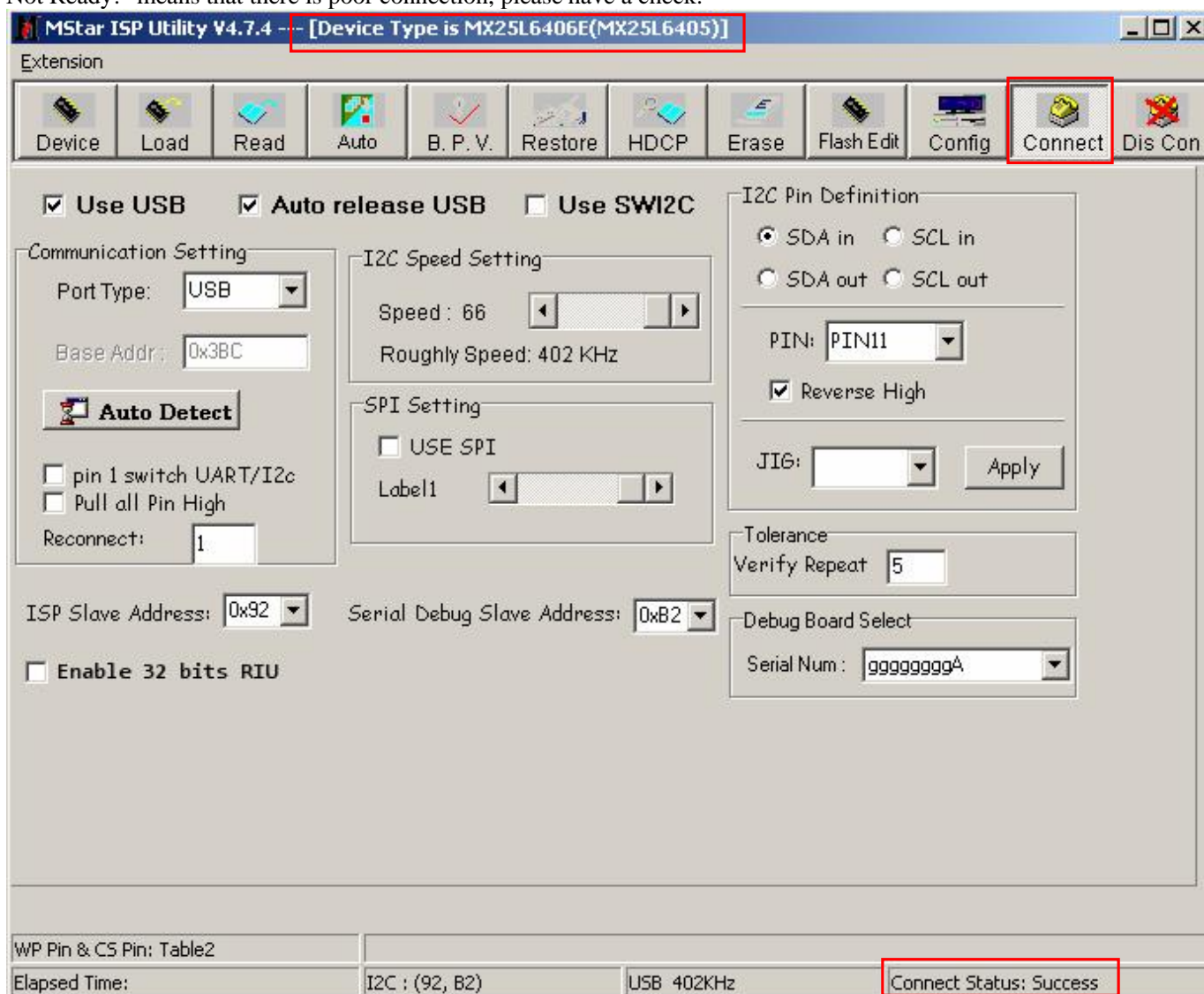
a. When the drives are installed, connect the Mstar USB Tool board to TV main board in the following way. Then connect the power cord and run the software ISP-Tool V4.7.4.exe.



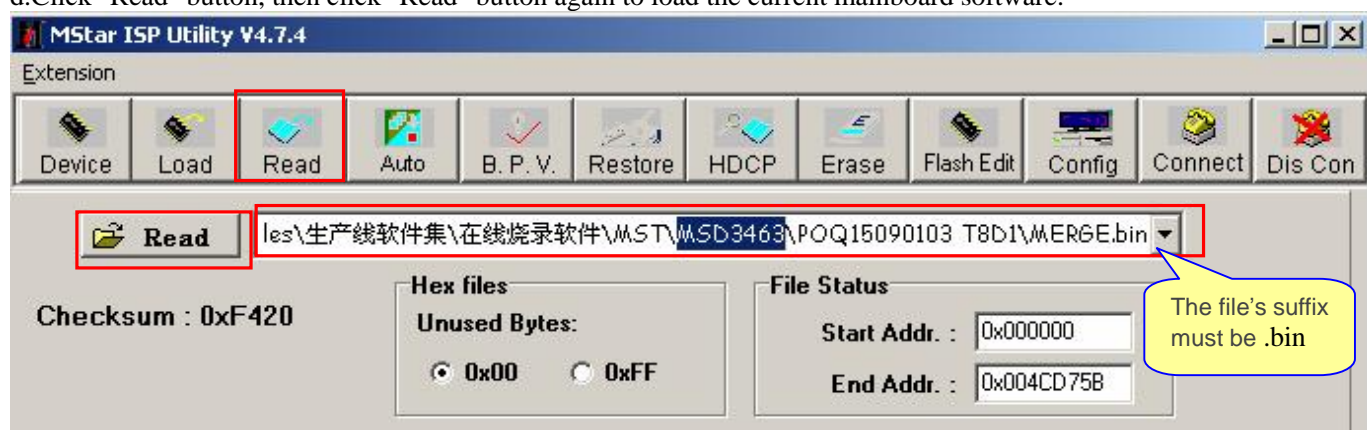
b. In the **config** menu bar, select **Use USB** and **Auto release USB**, Port Type under the Communication Setting items select **USB**. Set the burning speed of **28** in I2C Speed Setting item, ISP Slave Address item menu select **0X92**, Serial Debug Slave Address menu select **0XB2**.



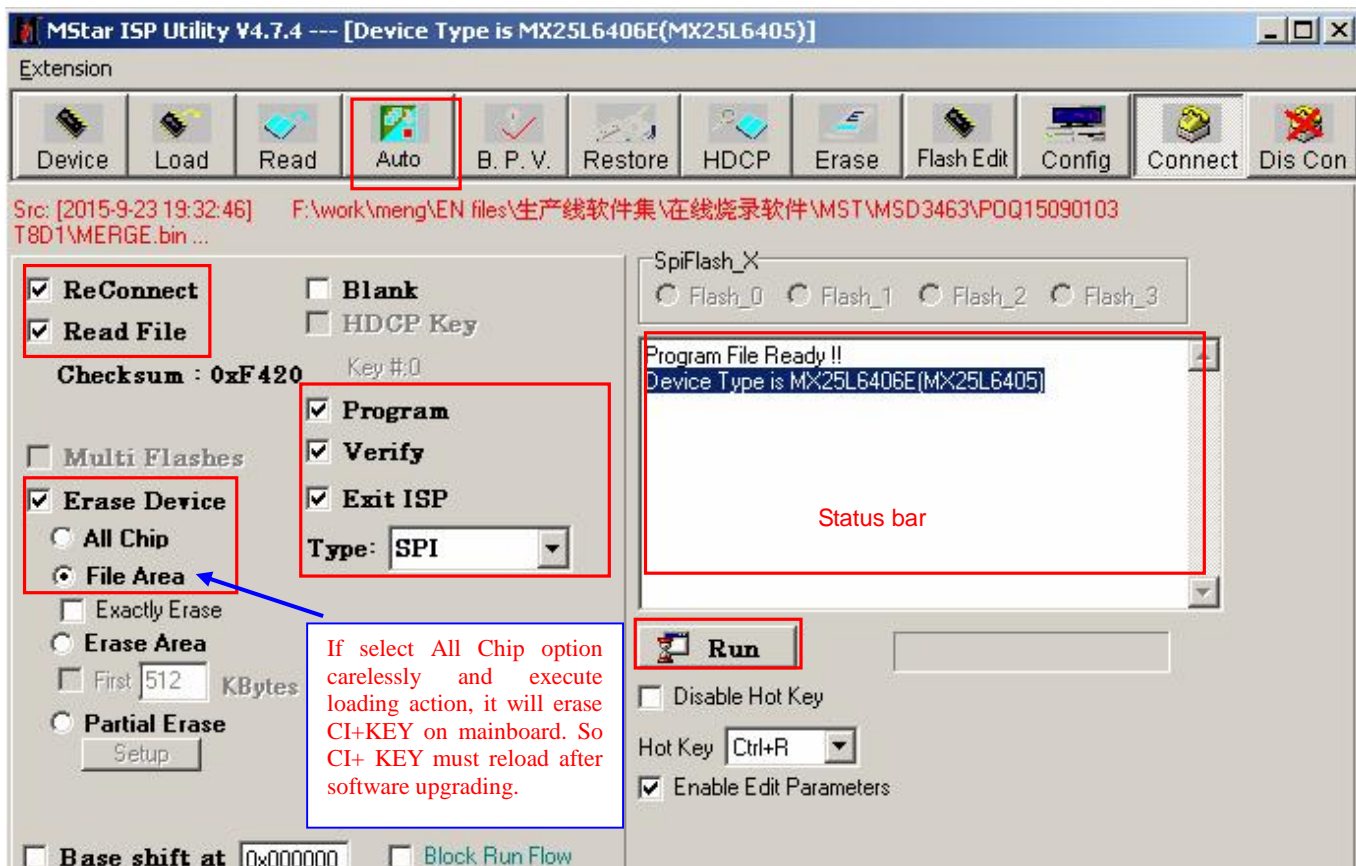
c. Click Connect button, If it prompts "Device Type is \*\*\*\*\*" means that connect normally; If it prompts "Program File Not Ready!" means that there is poor connection, please have a check.



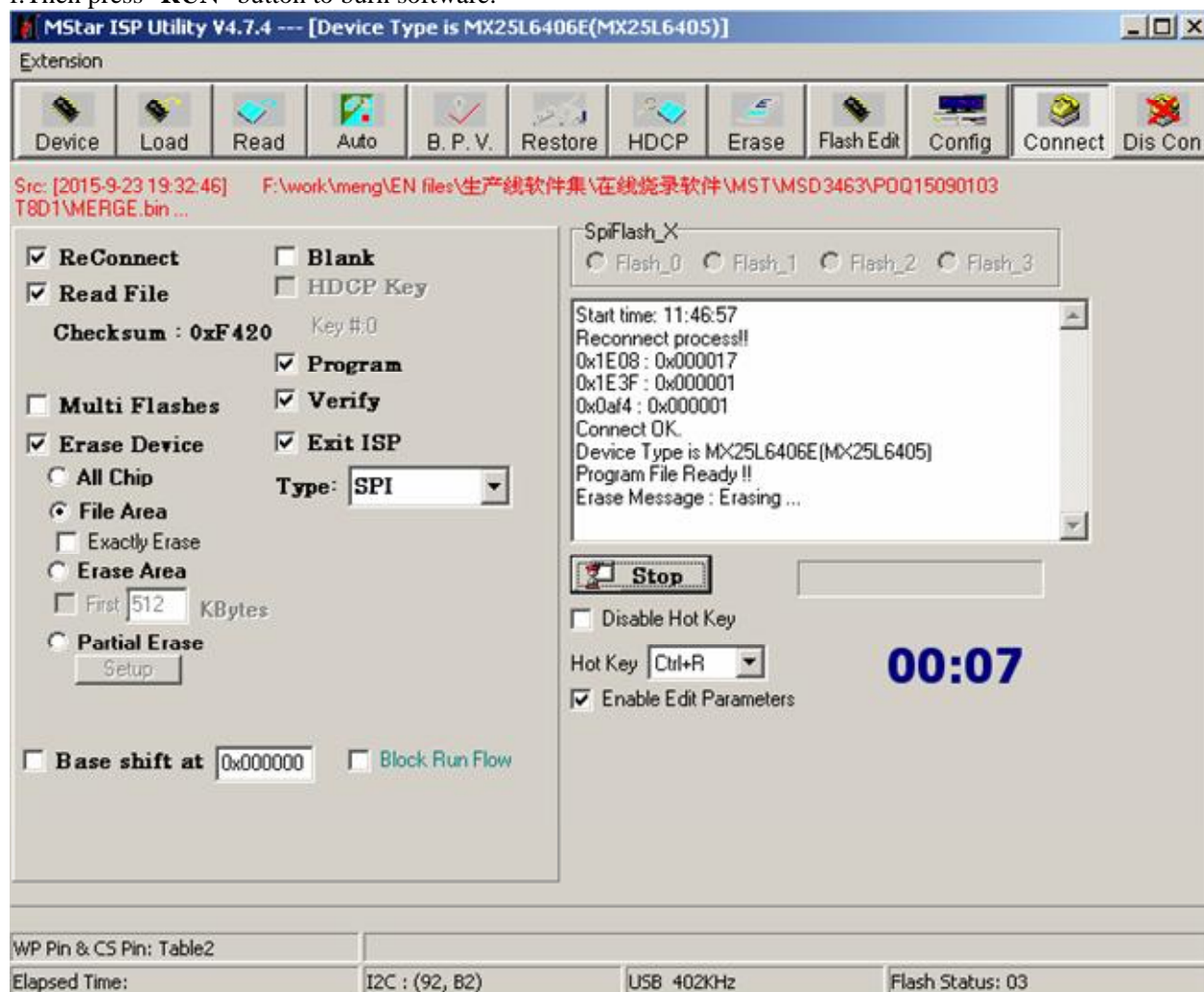
d. Click "Read" button, then click "Read" button again to load the current mainboard software.



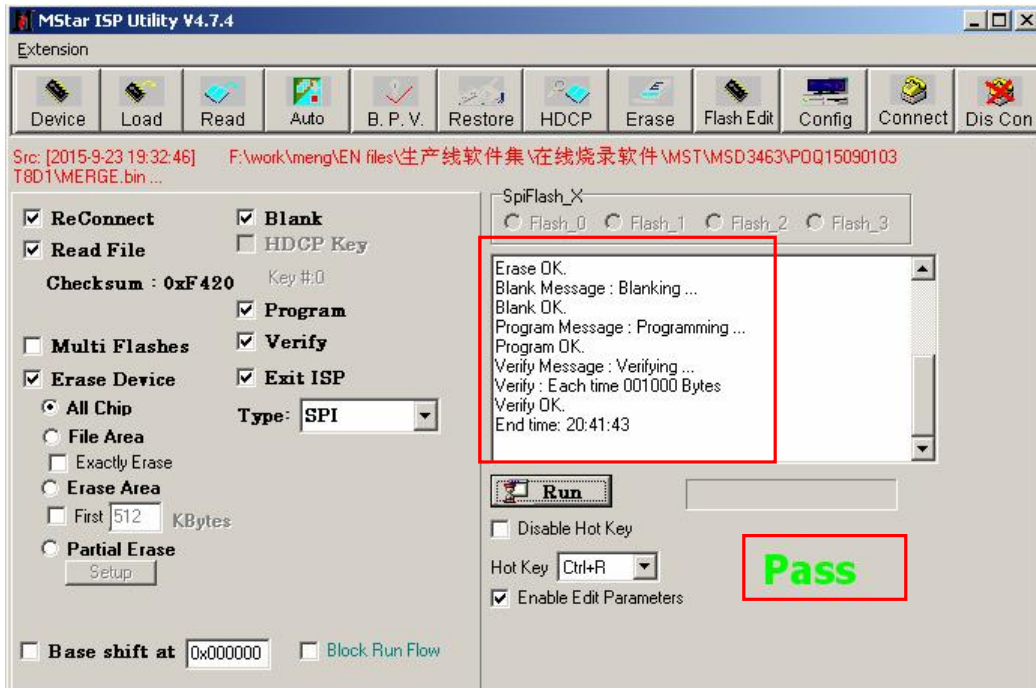
e. Click "Auto" button, then set it according to the following figure.



f. Then press "RUN" button to burn software.



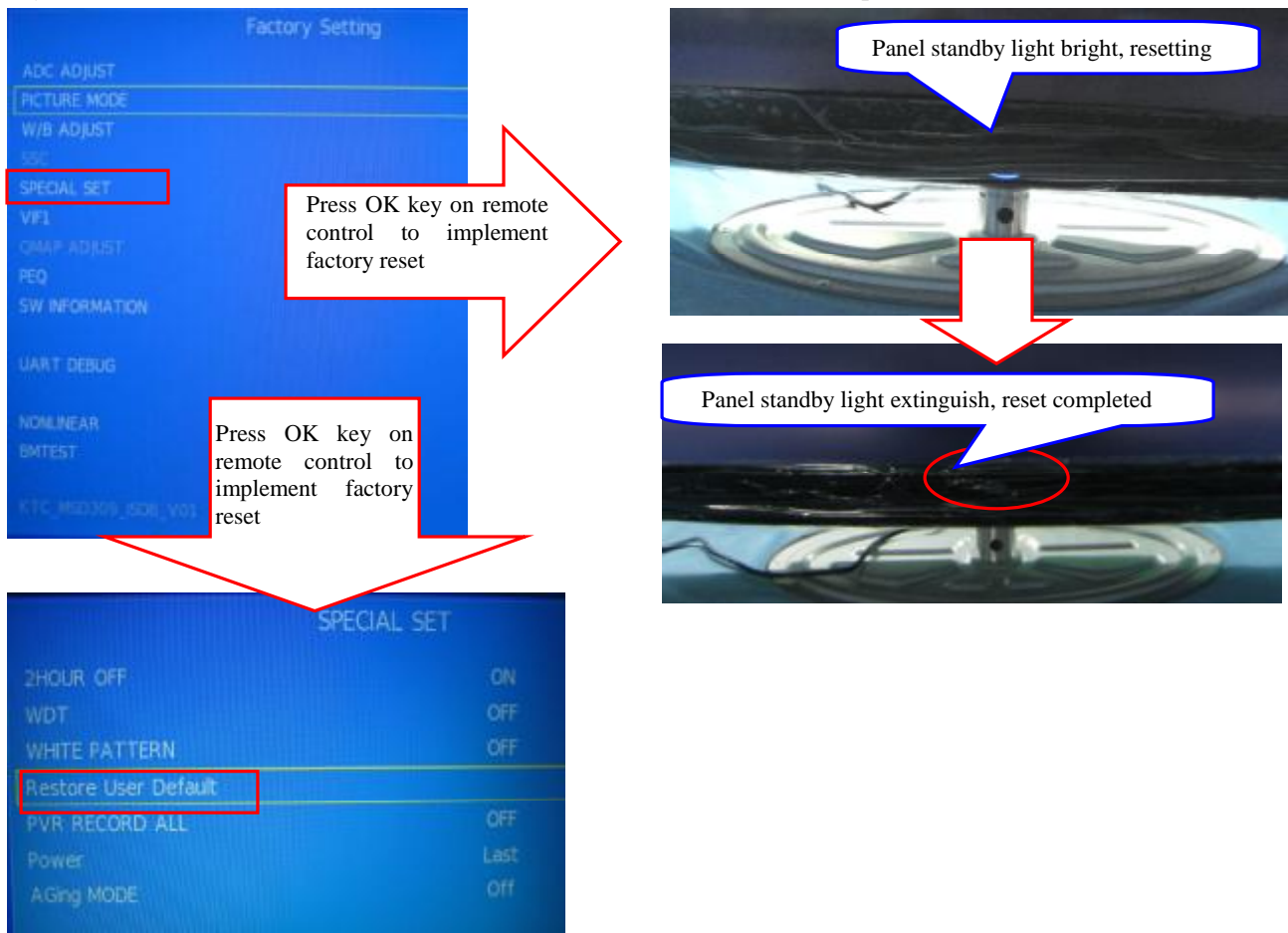
When display "PASS" after burning, means that software has burnt successfully.



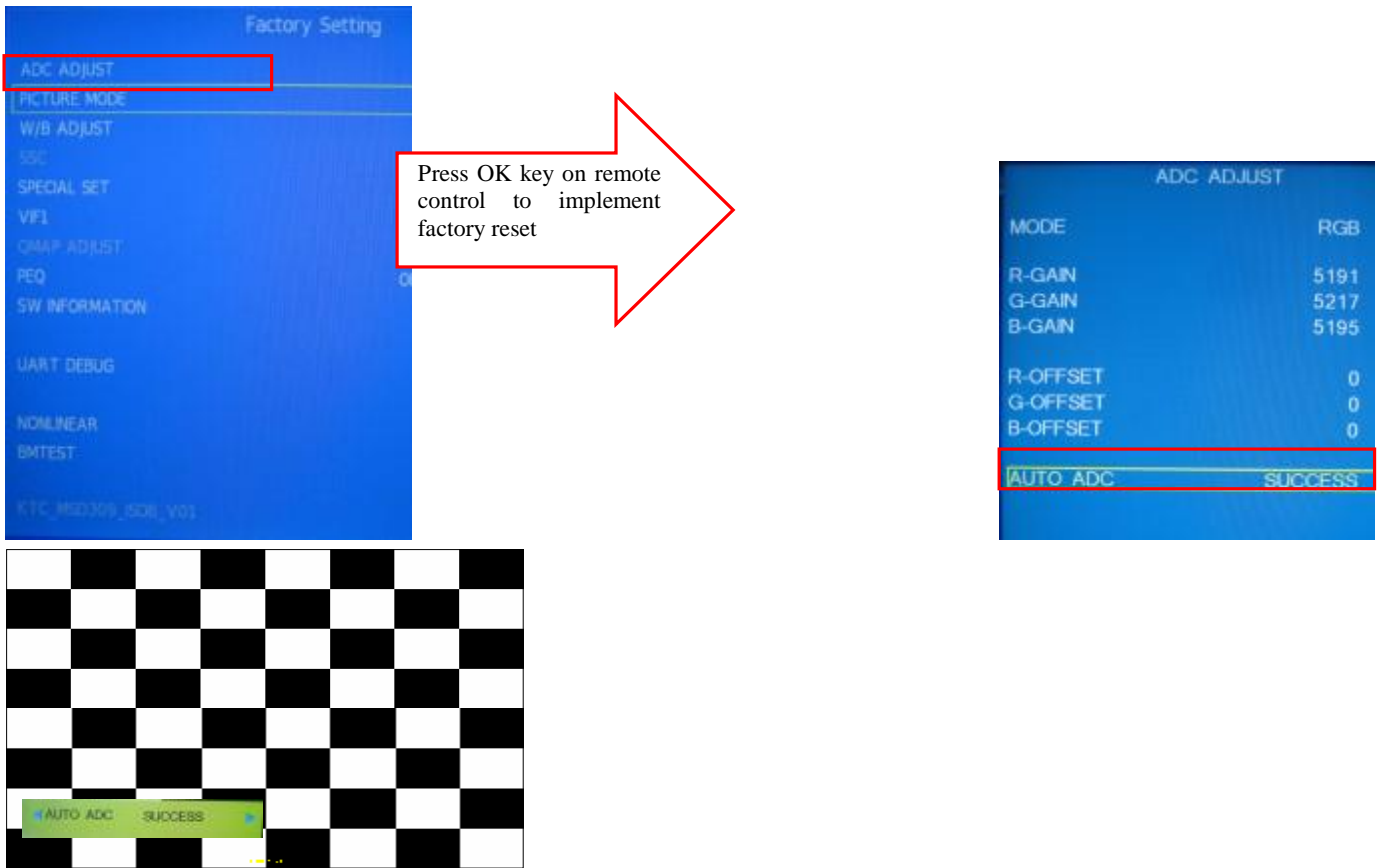
Never plug or unplug the connection lines in the burning process. Please turn the power switch to “Off” when installing ISP board. Pull out the power cord from the machine and then pull out the burning adapter from the machine, when burning completed, change the TV and click **Run** button to burn next machine.

5. When upgrade complete, install the machine back cover, then must be adjusted before leave factory:

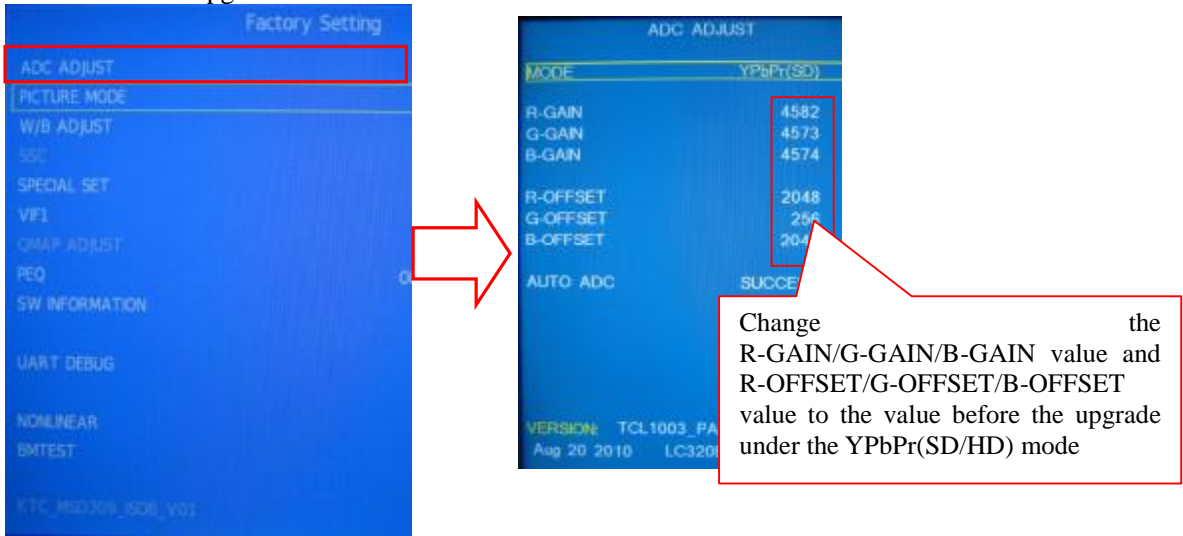
(1). Power to the machine, press MENU button on the remote control to popping the main menu, press 8202 number keys and then will popping the factory menu automatically, move the cursor to the "SPECIAL SET" option, press the remote control OK key to enter the next level menu, select "Restore User Default" in SPECIAL SET submeun, press OK key and the machine will black screen and restart after about 8 seconds, complete the reset action.



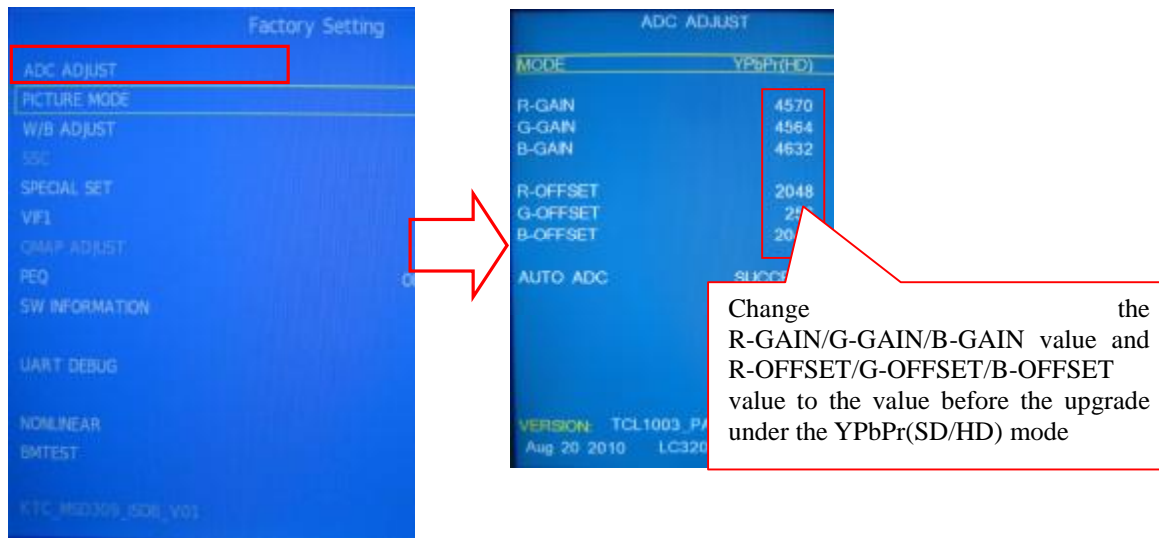
- (2). Insert signal cable to the machine, switch to the PC message source.
- (3). Run the KTC-LCD test software, switch to the mosaic picture and best resolution. Press MENU key to popup the main menu, and then press 8202 number keys to enter the factory menu, press the shift down key to ADC ADJUST option to press OK key to enter the next level menu. In the MODE option press left/right cursor keys to select RGB, and then press shift down key to move the cursor to the Auto ADC option, press OK key to enter the next level menu, press the left/right button to implement ADC action (The screen will flash and Auto ADC function menu prompt SUCCESS means that debug success, prompt FAIL said that debug failed, try again), press the MENU button to exit factory menu when debugging completed.



- (4). Under the YPbPr message source, press the MENU button after popping the main menu, then press 8202 number keys to enter the factory menu, select ADC ADJUST item, press the OK key to enter the next level menu, move the cursor to the MODE item, press the left/right Moving key mover cursor to select YPbPr(SD)item, change the R-GAIN/G-GAIN/B-GAIN value and R-OFFSET/G-OFFSET/B-OFFSET value of the machine after the upgrade to the value before the upgrade.



- (5). In the ADC ADJUST item, press OK key to enter the next level menu, move the cursor to the MODE item, press the left/right keys to move cursor select the YPbPr(HD)item, change the R-GAIN/G-GAIN/B-GAIN value and R-OFFSET/G-OFFSET/B-OFFSET value of the machine after the upgrade to the value before the upgrade.



(6). Complete the ADC ADJUST debugging, press MENU key succession to exit the factory built-in menu to save the adjusted data, and then restore the original packaging.